

South of the Border - Quilt

Featuring the South of the Border Collection by Whistler Studios
Quilt Design & Pattern by Heidi Pridemore of The Whimsical Workshop
Quilt Size: 56" x 60"



Please Note: Quilt Image shown is a digital representation, fabric look may vary on your project. Check www.windhamfabrics.com Free Project section online to see if there are any pattern updates before you start your quilt project.



812 Jersey Ave – Jersey City, NJ 07310 – 201.659.0444 ~ FAX: 201.659.9719
www.windhamfabrics.com email: retail@windhamfabrics.com

South of the Border - Quilt

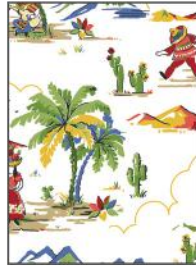
Page 2

Estimated Fabric Requirements:

- ½ yard – 43469-2 Blue
- ½ yard – 43469-X Multi
- ½ yard – 43470-5 Yellow
- 1 yard – 43471-6 Green
- ¾ yard – 37098-14 Duckling
- 1 yard – 43471-4 Red
- ⅔ yard – 43471-2 Blue
- 1 yard – 43469-3 White
- 1 ⅛ yards – 37098-32 Bluebird
- ¼ yard – 37098-13 Saffron
- ⅓ yard – 37098-16 Cherry
- ¼ yard – 37098-39 Alligator
- ⅛ yard – 37098-12 Chalk
- ¼ yard – 37098-4 Brindle
- ¼ yard – 40171-15 Yellow/White
- 3 ¾ yards – 43472-X Multi



43469-2 Blue (A)



43469-X Multi (B)



43470-5 Yellow (C)



43471-6 Green (D)



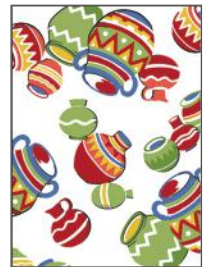
37098-14 Duckling (E)



43471-4 Red (F)



43471-2 Blue (G)



43469-3 White (H)



37098-32 Bluebird (I)



37098-13 Saffron (J)



37098-16 Cherry (K)



37098-39 Alligator (L)



37098-12 Chalk (M)



37098-4 Brindle (N)



40171-15
Yellow/White (O)



43472-X Multi
(Backing)



WINDHAM FABRICS

www.windhamfabrics.com

South of the Border - Quilt

Page 3

Cutting Instructions:

Fabric A: Jars – Blue

- Cut two 6 ½" x Width of Fabric (WOF) strips. Sub-cut the strips into eight 6 ½" squares.

Fabric B: Scenic – Multi

- Fussy cut eight 6 ½" squares, each centered on a scene.

Fabric C: Cactus – Yellow

- Cut two 6 ½" x WOF strips. Sub-cut the strips into seven 6 ½" squares.

Fabric D: Basket Weave – Green

- Cut three 3 ½" x WOF strips. Sub-cut the strips into thirty-two 3 ½" squares.
- See instructions to cut one large cactus, one small cactus, one hat band and two maraca bands.

Fabric E: Palette – Ducking

- Cut three 3 ½" x WOF strips. Sub-cut the strips into thirty-two 3 ½" squares.
- See instructions to cut four large flower centers, three small flower centers and one hat set.

Fabric F: Basket Weave – Red

- Cut three 3 ½" x WOF strips. Sub-cut the strips into twenty-eight 3 ½" squares.
- See instructions to cut two maraca bands.
- Cut six 2 ½" x WOF strips for the binding.

Fabric G: Basket Weave – Blue

- Cut three 1 ½" x WOF strips. Sub-cut the strips into six 1 ½" x 18 ½" strips.
- Cut five 1 ½" x WOF strips. Sew the strips together end to end with diagonal seams and cut four 1 ½" x 48 ½" strips.
- Cut three 1 ½" x WOF strips. Sew the strips together end to end with diagonal seams and cut two 1 ½" x 46 ½" strips.

Fabric H: Jars – White

- Cut three 5 ½" x WOF strips. Sew the strips together end to end with diagonal seams and cut two 5 ½" x 50 ½" strips.
- Cut three 5 ½" x WOF strips. Sew the strips together end to end with diagonal seams and cut two 5 ½" x 56 ½" strips.

Fabric I: Palette – Bluebird

- Cut one 18 ½" x 34 ½" WOF strip.
- Cut one 12 ½" x WOF strip. Sub-cut the strip into one 12 ½" x 18 ½" strip and one 10 ½" x 18 ½" strip.

Fabric J: Palette – Saffron

- See instructions to cut one sun and one hat inner brim.



WINDHAM FABRICS

www.windhamfabrics.com

South of the Border - Quilt

Page 4

Cutting Instructions - Continued:

Fabric K: Palette – Cherry

- See instructions to cut one hat bottom, four large flowers and three small flowers.

Fabric L: Palette – Alligator

- See instructions to cut one large bush and one small bush.

Fabric M: Palette – Chalk

- See instructions to one hat detail.

Fabric N: Palette – Brindle

- Cut one 4 ½" x 18 ½" WOF strip.

Fabric O: Artisan – Yellow/White

- See instructions to cut two maracas.

Backing: Blanket Stripe – Multi

- Cut two 64" x WOF strips. Sew the strips together and trim to 64" x 68" for the pieced back.

Block Assembly:

1. Sew one 1 ½" x 18 ½" Fabric G strip to the top and to the bottom of one 18 ½" x 34 ½" Fabric I strip to make one Unit 1 block (Fig. 1).
2. Following the manufacturer's instructions, trace the listed number of each template onto the paper side of the fusible web. Roughly cut out each template about 1/8" outside the drawn lines.
3. Press each template onto the wrong side of the fabrics as listed on the templates. Cut out each template on the drawn lines.
4. Refer to Figure 2 to arrange and press the two cacti, seven flowers and centers, two bushes and one sun onto the Unit 1 block.
5. Finish the raw edges of each shape with a decorative stitch such as a buttonhole or satin stitch to make one Block One rectangle.

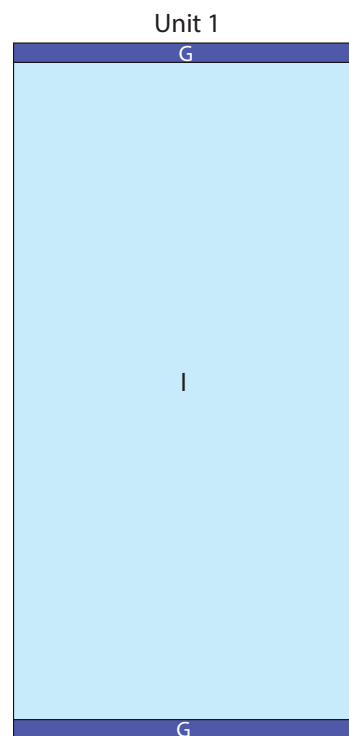


Fig. 1

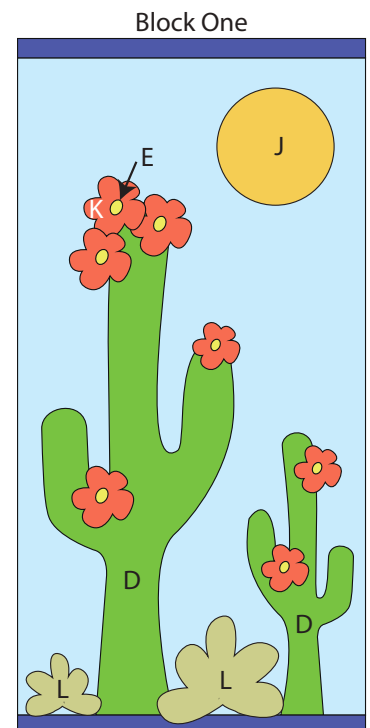


Fig. 2



WINDHAM FABRICS

www.windhamfabrics.com

South of the Border - Quilt

Page 5

6. Sew one 4 ½" x 18 ½" Fabric N strip to the bottom of one 12 ½" x 18 ½" Fabric I strip lengthwise to make one Unit 2 block (Fig. 3).
7. Refer to Figure 4 to arrange and press the all of the components of the hat onto the Unit 2 block.
8. Finish the raw edges of each shape with a decorative stitch such as a buttonhole or satin stitch to make one Block Two square.
9. Refer to Figure 5 to arrange and press the two maracas, and bands onto the 10 ½" x 18 ½" Fabric I strip.
10. Finish the raw edges of each shape with a decorative stitch such as a buttonhole or satin stitch to make one Block Three rectangle .

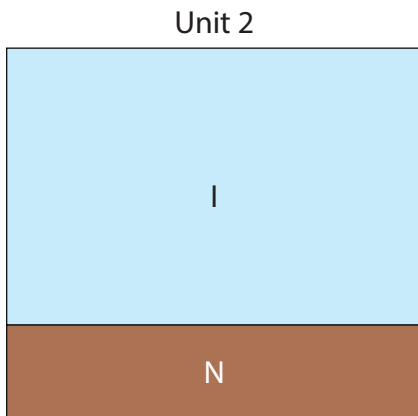


Fig. 3

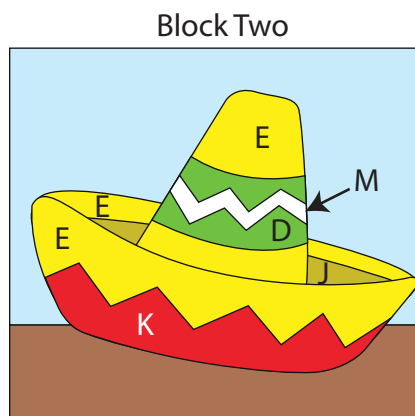


Fig. 4

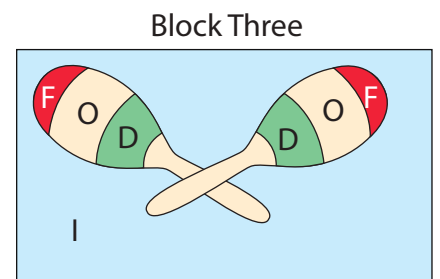


Fig. 5

11. Place one 3 ½" Fabric D square on the top left corner of one 6 ½" Fabric A square, right sides together (Fig. 6). Sew across the diagonal of the smaller square from the upper right corner to the lower left corner (Fig. 6). Flip open the triangle formed and press (Fig. 7). Trim away the excess fabric from behind the triangle ¼" away from the sewn seam.
12. Follow Figure 8 for the seam direction to add a 3 ½" Fabric D square to each of the remaining corners of the 6 ½" Fabric A square to make one Block Four square (Fig. 9).
13. Repeat Steps 11-12 to make eight Block Four squares total.

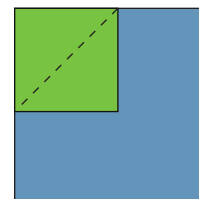


Fig. 6

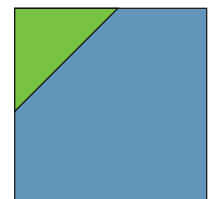


Fig. 7

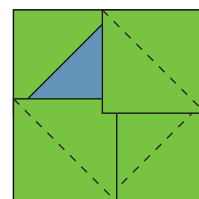


Fig. 8

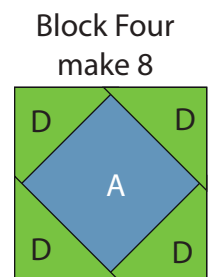


Fig. 9

South of the Border - Quilt

Page 6

14. Repeat Steps 11-12 using eight 6 ½" Fabric B squares and thirty-two 3 ½" Fabric E squares to make eight Block Five squares (Fig. 10).

Block Five
make 8

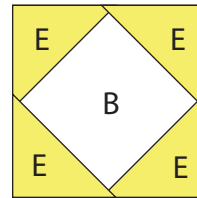


Fig. 10

15. Repeat Steps 11-12 using seven 6 ½" Fabric C squares and twenty-eight 3 ½" Fabric F squares to make seven Block Six squares.

Block Six
make 7

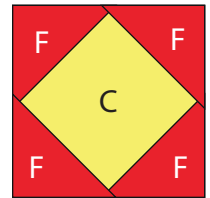


Fig. 11

Quilt Top Assembly – Refer to the Quilt Layout on page 8 while assembling the quilt top:

16. Sew one Block Four square, one Block Five square and one Block Six square together, in that order. Sew the strip to the top of the Block One rectangle.
17. Sew one Block Five square, one Block Four square and one Block Six square together, in that order. Sew the strip to the bottom of the Block One rectangle to make Column One.
18. Sew three Block Four squares, three Block Five squares and two Block Six squares together. Sew one 1 ½" x 48 ½" Fabric G strip to each side of the sewn strip to make Column Two.
19. Sew one Block Five square, one Block Six square and one Block Four square together, in that order. Sew one 1 ½" x 18 ½" Fabric G strip to the bottom of the sewn strip. Sew the new strip to the top of the Block Two square to make the top row.
20. Sew one Block Four square, one Block Six square and one Block Five square together, in that order. Sew one 1 ½" x 18 ½" Fabric G strip to the top and to the bottom of the sewn strip. Sew the Block Three rectangle to the bottom of the new strip to make the middle row.
21. Sew one Block Six square, one Block Five square and one Block Four square together, in that order. Sew one 1 ½" x 18 ½" Fabric G strip to the top of the sewn strip to make the bottom row.
22. Sew the three rows together to make Column Three.
23. Sew the three columns together to make the Center Block.
24. Sew one 1 ½" x 48 ½" Fabric G strip to each side of the Center Block. Sew one 1 ½" x 46 ½" Fabric G strip to the top and to the bottom of the Center Block.
25. Sew one 5 ½" x 50 ½" Fabric H strip to each side of the Center Block. Sew one 5 ½" x 56 ½" Fabric H strip to the top and to the bottom of the Center Block to make the quilt top.
24. Layer and quilt as desired.
25. Sew the six 2 ½" x WOF Fabric F strips together, end to end with 45-degree seams, to make the binding. Fold this long strip in half, lengthwise with wrong sides together, and press.
26. Bind as desired.



WINDHAM FABRICS

www.windhamfabrics.com


South of the Border - Quilt

Page 7

Templates

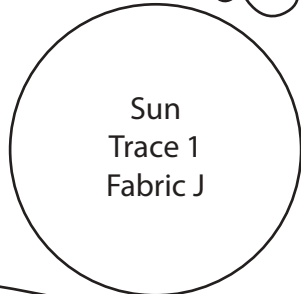
ENLARGE 400%

Reversed For Fusible Applique

 Square should measure
 1" **AFTER** enlarging
 templates 400%

Small
Center
Trace 3
Fabric E

Large
Center
Trace 4
Fabric E

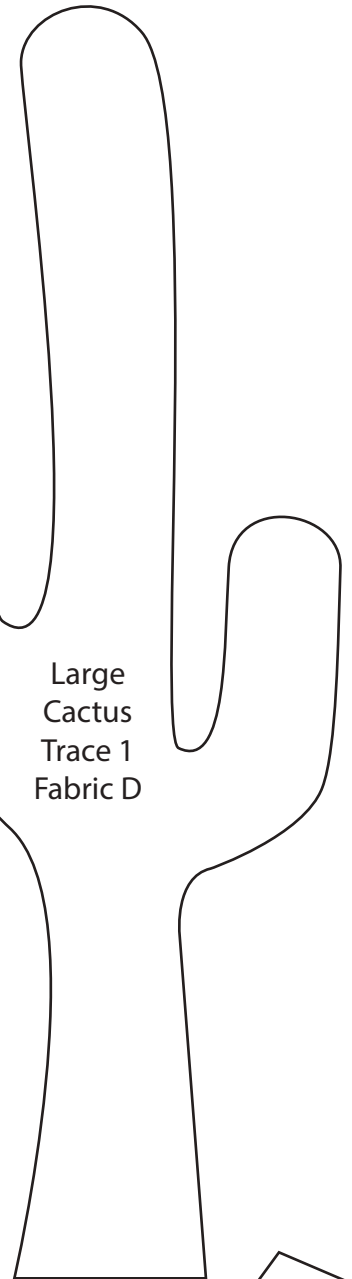
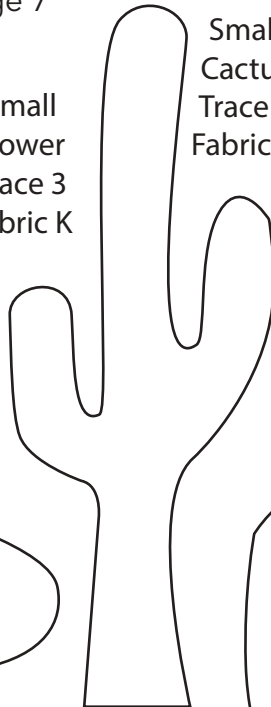


Sun
Trace 1
Fabric J



Small
Flower
Trace 3
Fabric K

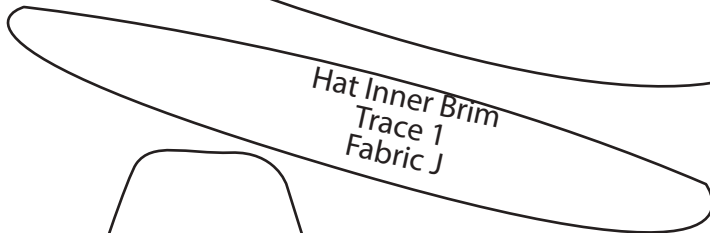
Small
Cactus
Trace 1
Fabric D



Large
Cactus
Trace 1
Fabric D



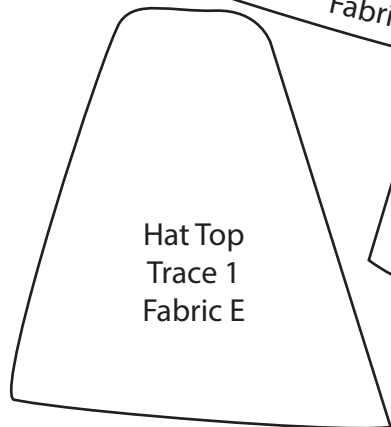
Hat Top Brim
Trace 1
Fabric E



Hat Inner Brim
Trace 1
Fabric J



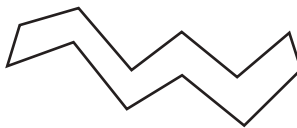
Large Bush
Trace 1
Fabric L



Hat Top
Trace 1
Fabric E

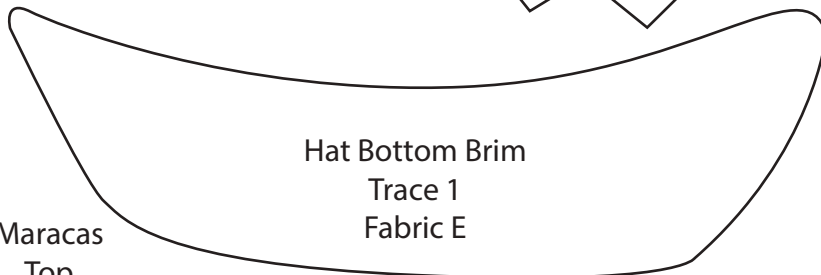


Hat Band
Trace 1
Fabric D

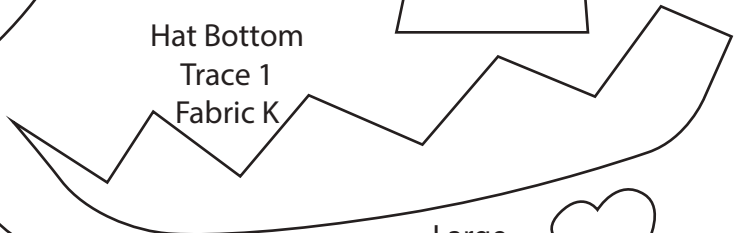


Hat Band
Detail
Trace 1
Fabric M

Small Bush
Trace 1
Fabric L



Hat Bottom Brim
Trace 1
Fabric E



Hat Bottom
Trace 1
Fabric K

Maracas
Top
Trace 2
Fabric F



Maracas
Middle
Trace 2
Fabric D



Maracas
Trace 2
Fabric O

Large
Flower
Trace 4
Fabric K

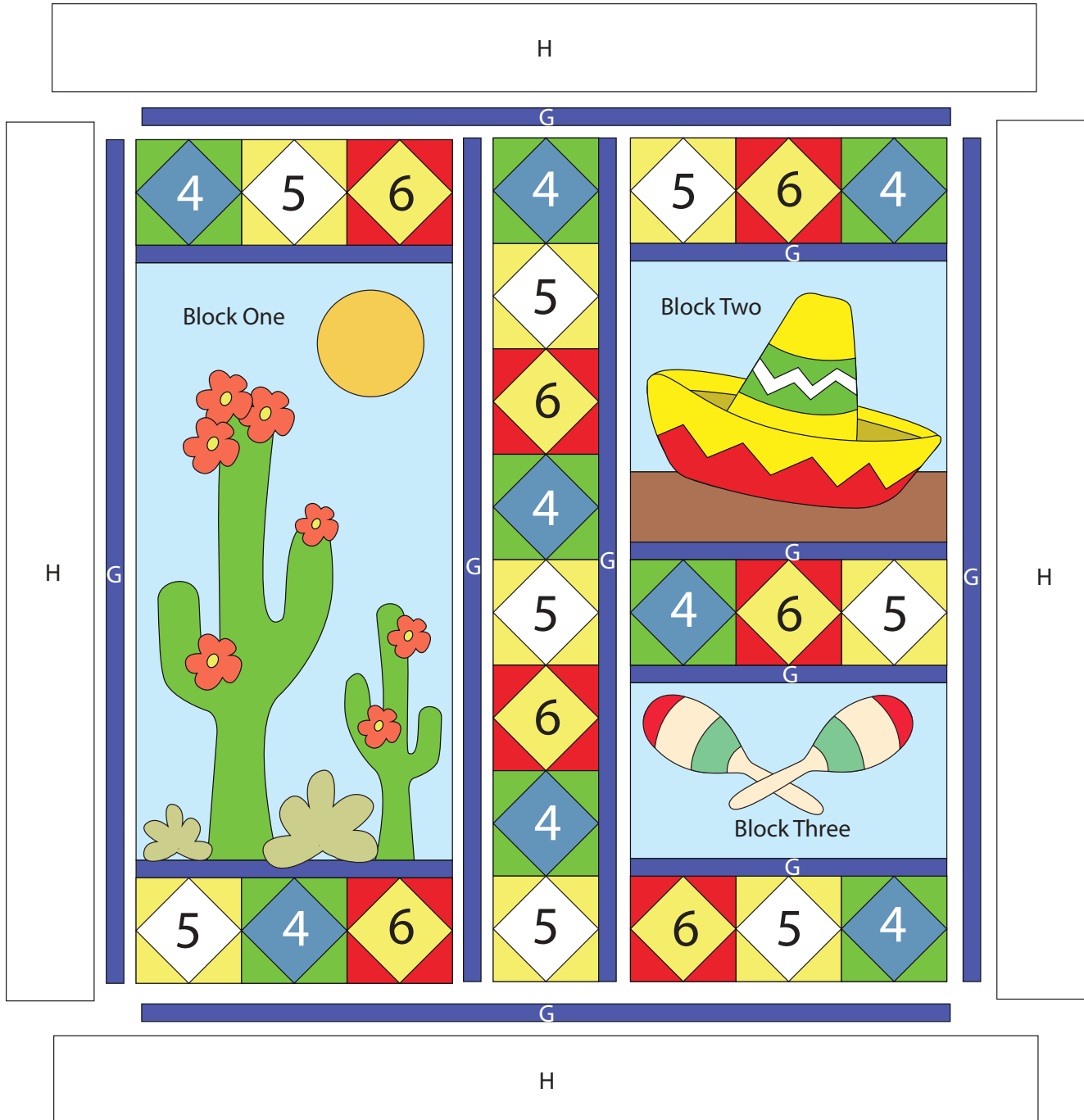


WINDHAM FABRICS

www.windhamfabrics.com

South of the Border - Quilt

Page 8



Quilt Layout

Be sure to visit www.windhamfabrics.com to see the complete collection and to download this and other FREE Projects